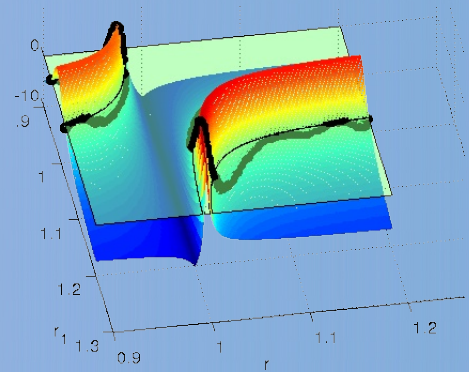
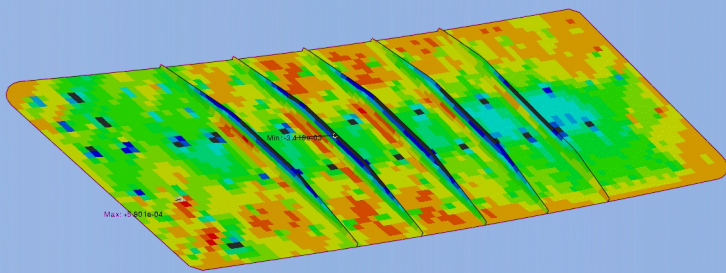


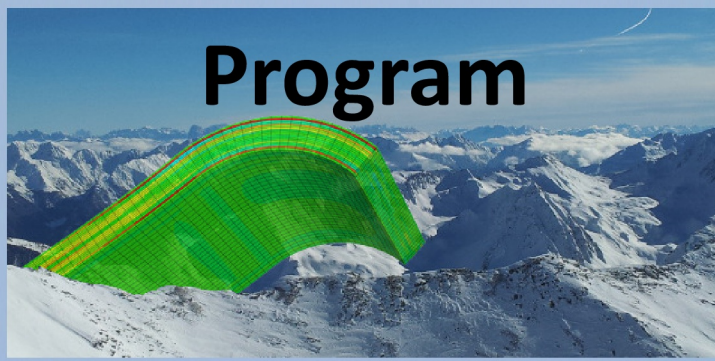
3rd Workshop on structural analysis of lightweight structures

May 15, 2014

INTALES GmbH, Natters, Tirol (A)



Program



09:00 – 09:30 **Registration**

09:30 – 09:45 **Welcome**

SESSION 1 – Markets & Products

09:45-10:15 **The Future of the European ARIANE Launcher**
R. Nicolay (AIRBUS D&S, Ottobrunn)

10:20-10:50 **From Theory to Reality-imposing real world requirements on the world of numerics**
P. Glaser (FACC AG, Ried im Innkreis)

10:55-11:25 **Process Simulation of Composites**
R. Hinterhölzl, TU München

11:30-12:00 **Analysis of blade impact on the case structure in commercial aircraft engines**
R. Tano, GKN Aerospace Sweden

12:00-13:30 **Lunch Break**

SESSION 2 – Optimization & Robustness

13:30-13:50 **Random Fields - efficient analysis and simulation**
C. Bucher (Vienna University of Technology)

13:55-14:15 **Monte Carlo based reliability analysis**
M. Schwarz (University of Innsbruck)

14:20-14:40 **Optimization algorithms for large structures**
M. Prackwieser (University of Innsbruck)

14:45-15:05 **A novel approach towards optimizing lightweight structures**
B. Goller (INTALES GmbH)

15:10-15:30 **New methods for lay-up optimization of composites**
E. Verginer (University of Innsbruck)

15:30-16:00 **Coffee Break**

SESSION 3 – Analysis tool

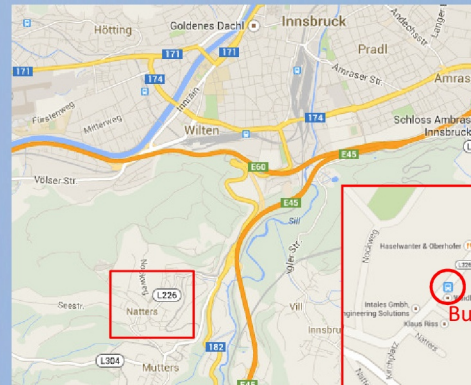
16:00-16:20 **Efficient solving techniques for the solution of Monte-Carlo simulations**
V. De Groof (University of Innsbruck)

16:25-16:45 **A robust approach to structural analysis**
A. Grassl (INTALES GmbH)

16:50-17:15 **Summary & Discussion**

VENUE

The workshop will be held in the community hall (Gemeindesaal) of Natters (Bahnhofstr. 11). Natters is located about 5 km to the south of Innsbruck.



Arrival:

By car: Highway A13 (direction to Brenner), exit Innsbruck Süd

By public transport: Train until Innsbruck main station, then change to the tram STB or the bus no. 4142.

CONTACT

INTALES

INTALES GmbH Engineering Solutions
Hermann-Josef Starmans
Innsbrucker Str. 1
A-6161 Natters (Tirol)
Tel.: +43/512/546111
starmans@intales.com

